

PLANNING GUIDE

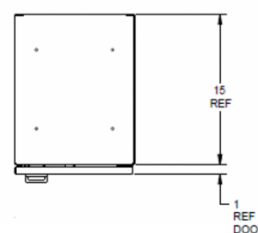
Day Use Lockers

Day Use Lockers offer a unique storage solution that combines the durability of steel construction with the aesthetics of a full overlay door in HPL or steel. The large variety of configuration and color options means Day Use Lockers can blend into the overall design of a space, form unique integrated space dividers and islands, or be used to create an eye-catching wall of awareness.

Locker Frame Dimensions

Tiers	1, 2, 3, 4, 5
Columns	1, 2, 3
Frame Heights	24", 36", 54", 60", 72"
Frame Depths	12", 15", 18", 24"
Frame Widths	12", 15", 18" (24", 30", 36", 45")

*Please note the frame depth does not account for 1" of overhang from the full-overlay door + depth of lock (varies by lock type)



Top View
15D Locker



Side View
15D Locker

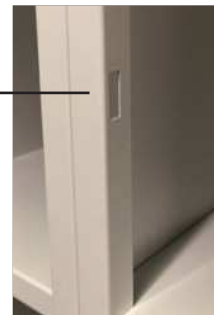
- Lockers can be ordered in single, double or triple column configurations
 - Double and triple column lockers use shared tops, bottoms and internal sides
- Position of shelves in multi-tier cabinets is fixed
- Not all combinations of tiers and columns is possible given height and width limitations
 - The smallest individual opening height is 12".
 - Example: it would not be possible to get a 5 tier locker with a frame height of 36" as it would result in individual openings of 7.2"
 - The maximum overall frame width is 45".
 - Example: a locker with 18W openings is NOT available as a 3 column since the width would be 54".
- Drop-in floors are use to access the levelers (note levelers are part of the base).
 - Qty 1 drop-in floor per column included with each cabinet



Clear Opening Sizes

Opening Width	Nominal Door Width - 2.308"
Opening Height	Nominal Door Height - 1.562"
Opening Depth	Nominal Frame Depth - .096"

Lock catch is built into the locker frame and therefore does not impede the clear opening



Door Details

- Doors are full overlay.
- Concealed, Euro style soft-close hinges
 - Hinges are adjustable to ensure matching reveals for all doors in a locker frame or even a bank of lockers.
- High Pressure Laminate (HPL) doors are $\frac{3}{4}$ " thick, feature Wilsonart selected design on both sides, and 3mm color matched PVC edge banding.
 - Note: Due to HPL sheet yields, orders with less than 30 HPL doors are subject to a Minimum Order Quantity Charge.
- Steel doors are double walled, 20 gauge.
- Default hinge placement is on right side of door, with lock on left.
- Doors do not have individual handles other than what is provided by the lock.
- Individual doors in a single locker frame can be different colors.
 - Up to charge per color change applies.
- Door widths can NOT exceed doors heights.

NOTE: In Configura, door heights will round up to the nearest 3" increment

Lock Details*

- Locks are centered vertically on the door.
- Default lock placement is on the left side of the door.
- Locks are intended for "shared-use" applications.
- Default lock placement is on the left side of the door.
- Manager and Programming is on the left side of the door.
 - NOTE: Configura will add 1 or each key per order. Additional keys can be pick-listed.
- ADA user key available for some lock styles via pick list.

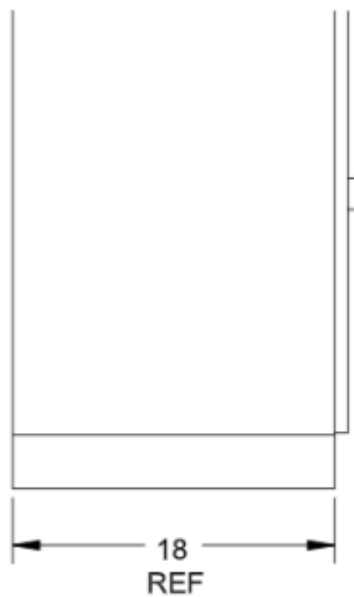
**See Lock Reference Guide for additional lock information.

LOCK	KEY PART NUMBERS	KEY PART NUMBERS	ADA USER KEY PART NUMBER	OTHER ACCESSORIES
	Digilock Numeris Aspire Keypad	DULKNUMPRG DULKNUMMGR	DULKNUMPRG DULKNUMMGR	
	Digilock Axis Next Keypad	DULKNXTPRG DULKNXTMGR	DULKNXTDKUSER	
	Digilock DAK1-ATS1 Keypad	DULKDKPRG DULKDKMGR	DULKNXTDKUSER	
	Zephyr Keypad	DULKZPCTRL DULKZPMGR		
	Digilock Mechanical Combo	DULKCOMBOCODEKEY DULKCOMBOMGRKEY DULKCOMBOREMOVEKEY		
	Ojmar Combi Pro Lock	DULKOJMARMMASTER		
	Digilock Hasp	n/a		

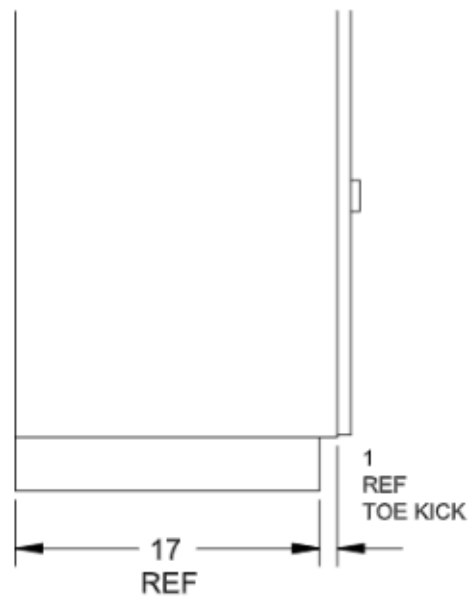
LOCK	KEY PART NUMBERS	KEY PART NUMBERS	ADA USER KEY PART NUMBER	OTHER ACCESSORIES
	Keyed Different Cam lock	DULKKEYMASTER		
	Digilock Numeris Aspire RFID	DULKNUMPRG DULKNUMMGR		DULKNUMRFIDSTKR :RFID sticker
	Ojmar OCS Pro Keypad	DULKOJOCSEKEY		
	Ojmar OTS Advance RFID	DULKOJOTSPRG		DULKOJRFIDSTKR: RFID sticker DULKOJRFIDBRAC :RFID bracelet in black
	Ojmar OCS Smart Lock			
	Gantner ECO Side Lock and Gantner Net.Lock	*MUST SEE GANTNER		DULLAGLABEL: adhesive door label for metal doors DULLAGPLUG : LED plug for HPL doors DULBASEGPLUG: plastic plug for electrical cutouts in base

Base Details

- Bases are recommended to raise the height of the bottom opening as well as provide leveling capabilities
- Threaded appliance levelers in each corner.
- Height is 4"
- Bases can be ordered flush or with 1" recess to create a toe kick
 - Note: the flush bases is flush with the frame of the locker, full overlay door overhangs approximately 1" from the front of the locker frame.



Side View
Flush Base



Side View
Recessed Base

Shelf Details

- Shelves are 18-gauge steel.
- Factory installed 12 inches from the top of the opening.
- Only available in the openings greater than the 28" H

Interior Hooks



- Hooks are riveted into place in assembly at the factory
 - Single hook can be placed on right, left and/ or back wall
 - Hooks positioned 3 3/4" below the nearest horizontal surface

Vented Backs



- Rear vented pattern
- Vertical slits are 1/4" Wide x 2" Tall and spaced 1/2" apart

Number tags



- Tags are adhesive backed and applied in the field
- Black plastic tag with the white etched front
 - Number scheme must be specified in Configura

Trim

Refer to the General Locker Trim Planning Guide. This includes sloped tops, corner filler, and vertical trim.